

TRICONVILLE™

rivera





TRICONVILLE™
rivera

Rivera stacking chairs are durable and perfectly suited to any outdoor setting. Rivera teak sling chair meet the requirements in form, material and of course, seating comfort, which compliments for all of our dining tables, large and small, and is ideal for use in any outdoor area. The multi-position relaxation arm chairs are very easy to adjust. Providing ultra comfort and maintenance free.

- Chairs
- Tables
- Sofas
- Benches
- Loungers & Others



PRODUCT LIST ▾



Rivera Stacking Chair
TRC-05A *page 03*



Rivera Recliner
TRC-02A *page 04*



Rivera Foot Rest
TRFT-02A *page 05*



Rivera Steamer
TRL-04A *page 06*



Rivera Lounger-Flat
TRL-02F *page 07*



Rivera Lounger- Curve
TRL-02A *page 08*



Rivera Lounger Sunshade
TRL-02A-SUN *page 09*

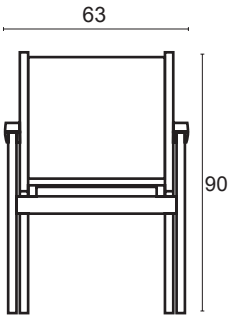
TRC-05A

Rivera Stacking Chair

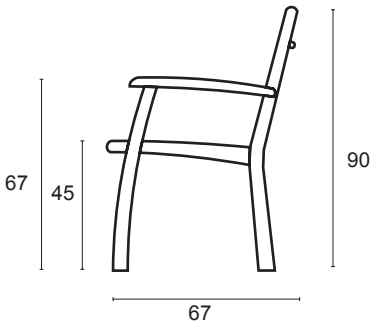


DIMENSION ▼

* in centimeters



A front view

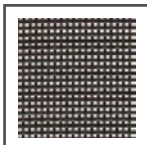


B side view

MATERIALS ▼



PREMIUM TEAK
mainframe



BATYLINE®
high-tech fabric of stability
and stretch resistance.
Available in 3 colors:

-  Black
-  White
-  Sand

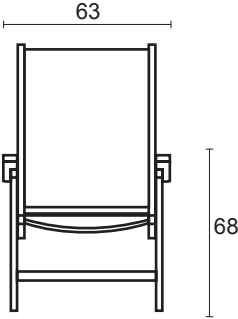
TRC-02A

Rivera Recliner

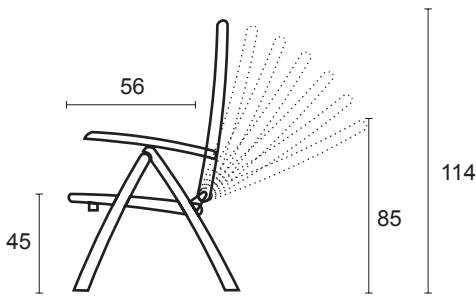


DIMENSION ▼

* in centimeters



A front view

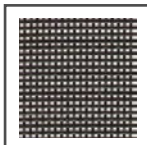


B side view

MATERIALS ▼



PREMIUM TEAK
mainframe



BATYLINE®
high-tech fabric of stability
and stretch resistance.
Available in 3 colors:

-  Black
-  White
-  Sand

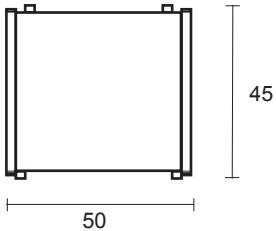
TRFT-02A

Rivera Foot Rest

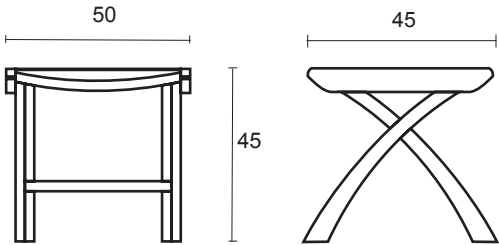


DIMENSION ▼

* in centimeters



A top view

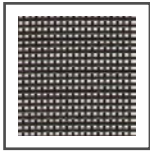


B side view

MATERIALS ▼



PREMIUM TEAK
mainframe



BATYLINE®
high-tech fabric of stability
and stretch resistance.
Available in 3 colors:

-  Black
-  White
-  Sand

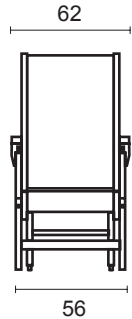
TRL-04A

Rivera Steamer

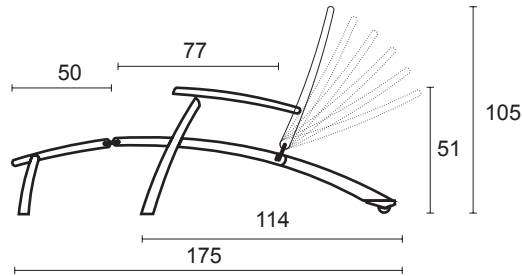


DIMENSION ▼

* in centimeters



A front view

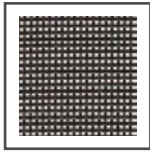


B side view


MATERIALS ▼



PREMIUM TEAK
mainframe



BATYLINE®
high-tech fabric of stability
and stretch resistance.
Available in 3 colors:

-  Black
-  White
-  Sand

TRL-02F

Rivera Lounger-Flat



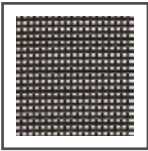
DIMENSION

* in centimeters


MATERIALS

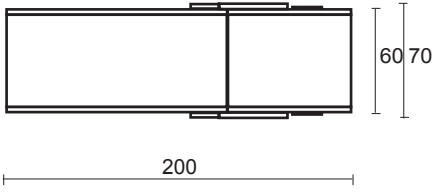


PREMIUM TEAK
mainframe

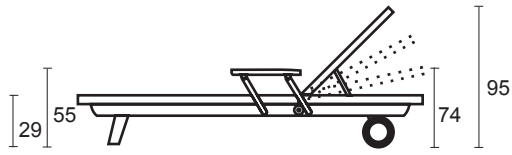


BATYLINE®
high-tech fabric of stability
and stretch resistance.
Available in 3 colors:

-  Black
-  White
-  Sand



A top view



B side view

TRL-02A

Rivera Lounger- Curve



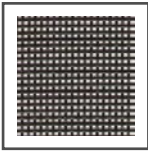
DIMENSION

* in centimeters




MATERIALS

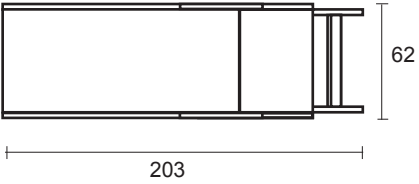


PREMIUM TEAK
mainframe

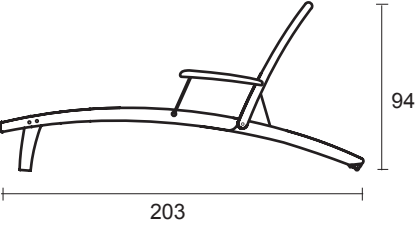


BATYLINE®
high-tech fabric of stability
and stretch resistance.
Available in 3 colors:

-  Black
-  White
-  Sand



A top view



B side view

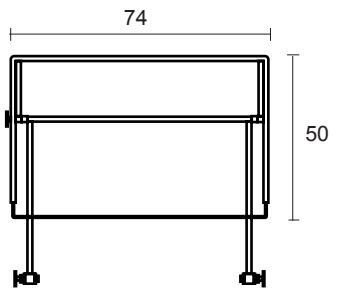
TRL-02A-SUN

Rivera Lounger
Sunshade

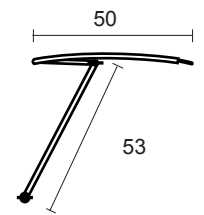


DIMENSION

* in centimeters



A top view



B side view




MATERIALS



STAINLESS STEEL
mainframe



BATYLINE®
high-tech fabric of stability
and stretch resistance.
Available in 3 colors:

-  Black
-  White
-  Sand

 **TRICONVILLE**™
rivera